

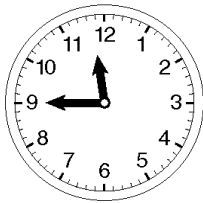
1 Which shows the time 5:45 in another way?

- A quarter after 5
- B quarter after 6
- C 45 minutes to 5
- D 15 minutes to 6

2 Which is the most likely time to eat breakfast?

- A 2:30 A.M.
- B 7:30 A.M.
- C 12:30 P.M.
- D 8:30 P.M.

3 Which time is shown on the clock?



- A quarter after 9
- B quarter to 9
- C quarter to 12
- D quarter after 12

4 Which is the most likely time to do your homework after school?

- A 11:30 A.M.
- B 5:30 A.M.
- C 6:30 P.M.
- D 11:30 P.M.

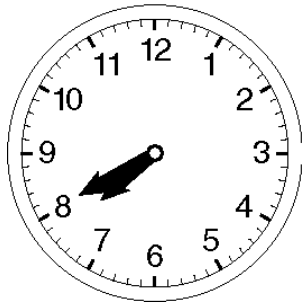
5 Which is the most likely time to eat lunch?

- A 4:30 A.M.
- B 8:30 A.M.
- C 12:30 P.M.
- D 5:30 P.M.

6 Which clock shows a time between 6:00 a.m. and 7:00 a.m.?

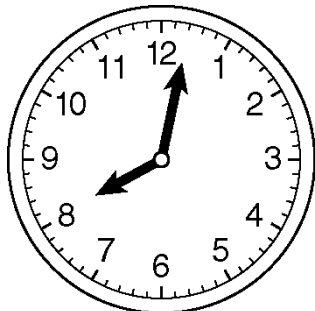


- 7 This clock shows what time Eric finished dinner. What time did Eric finish dinner?



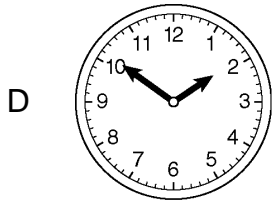
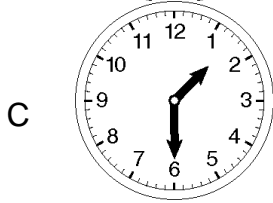
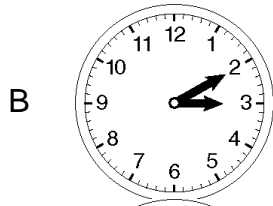
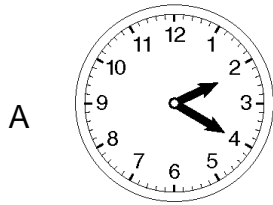
- A 6:40
- B 8:40
- C 7:40
- D 8:00

- 8 The time shown on the clock is the time Monica got to school. What time did Monica get to school?

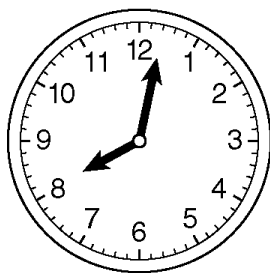


- A 8:01
- B 8:10
- C 8:15
- D 12:45

- 9 Gary started cleaning his room between 2:15 P.M. and 3:00 P.M. Which clock shows a time between 2:15 P.M. and 3:00 P.M.?





- 10 The clock shows the time Rhonda started her test. What time did Rhonda begin?



- A 8:03
- B 8:00
- C 8:01
- D 8:02

- 11 Marcus went to the movies with his family.



<p>This clock shows the time the movie started.</p> 	<p>This clock shows the time the movie ended.</p> 
---	--

How long was the movie that Marcus's family saw?

- A 1 hour
 - B 2 hours
 - C 3 hours
 - D 4 hours
- 12 Mrs. North called and ordered a pizza at 1:00 P.M. The pizza was delivered at 1:40 P.M. How long did she have to wait for the pizza?
- A 20 minutes
 - B 25 minutes
 - C 30 minutes
 - D 40 minutes
- 13 Darren arrived at school at 8:00 a.m. and left at 2:30 p.m. Dean arrived at school at 8:15 a.m. and left at 3:15 p.m. How much longer was Dean at school than Darren?
- A 15 minutes
 - B 20 minutes
 - C 30 minutes
 - D 1 hour



Topic 12 Test

- 14 Mario went to the zoo with his family.

<p>This clock shows the time they left.</p> 	<p>This clock shows the time they returned.</p> 
---	--

How long was Mario's family gone?

- A 3 hours
 - B 4 hours
 - C 5 hours
 - D 6 hours
- 15 A third grade class went on a field trip to a farm.

<p>This clock shows the time the class left in the morning.</p> 	<p>This clock shows the time the class returned to school in the afternoon.</p> 
---	---

How long was the class gone on the field trip?

- A 3 hours
- B 4 hours
- C 5 hours
- D 6 hours

Topic 12 Test

- 16 Fran read the thermometer this evening. The temperature was 72°F . This temperature was 12°F less than the temperature in the afternoon. The afternoon temperature was 13°F greater than the temperature in the morning. What was the temperature in the morning?
- A 73°F
 - B 71°F
 - C 97°F
 - D 74°F
- 17 Mrs. Truitt arrived at the mall at 4:15 P.M. To get there she stood at the bus stop for 30 minutes, rode the bus for 20 minutes, and then walked another 15 minutes to get to the mall. What time did she start her trip to the mall?
- A 2:50 P.M.
 - B 3:10 P.M.
 - C 3:20 P.M.
 - D 4:10 P.M.
- 18 Brooke finished her homework at 8:05 P.M. She took 50 minutes to write a report, 10 minutes to look up a word, and 35 minutes to read. What time did she start her homework?
- A 7:10 P.M.
 - B 6:50 P.M.
 - C 6:30 P.M.
 - D 6:25 P.M.
- 19 Travis arrived home at 5:20 P.M. To get there he stood at the bus stop for 15 minutes, rode the bus for 35 minutes, and then walked another 10 minutes to get home. What time did he start his trip home?
- A 4:30 P.M.
 - B 4:20 P.M.
 - C 4:15 P.M.
 - D 3:30 P.M.

- 20 Sam finished his chores at 11:00 A.M. He took 35 minutes to do the dishes, 25 minutes to clean his room, and 40 minutes to wash his father's car. What time did he start his chores, and how much time did he spend on them?
- A 9:10 A.M.; 1 hour 50 minutes
 - B 9:20 A.M.; 1 hour 40 minutes
 - C 9:40 A.M.; 1 hour 20 minutes
 - D 10:20 A.M.; 40 minutes